

barkman™  
Steps







- 4 Sectional Steps
- 6 Legacy Steps
- 8 Dura-lite Steps
- 10 Specifications
- 11 Ordering Guide

## Creating a Step That Lasts

Barkman has been in the business of making steps since 1955. Over the years, we have learned the art of creating steps that not only look great, but also stand the test of time.

Climate controlled manufacturing means consistent quality every time. Year-round installation allows us the flexibility to work with your schedule. Make our Barkman step a part of your home and discover how our step options can create a lasting impression to your entrance.





# Sectional Steps

Sectional Steps provide the most flexibility of all the Barkman steps. It is available with up to four risers and can be manufactured to match most widths and unique entrance shapes.

Sectional Steps are available in fractional widths, allowing you to choose the perfect size for your entranceway.

More ideas at [BarkmanConcrete.com](http://BarkmanConcrete.com)  
Railings not supplied by Barkman.  
Actual colours may vary.





# Legacy Steps

Build an entranceway that stands the test of time with Barkman Legacy Steps. Legacy Steps offer the same aesthetics as our popular Sectional Step with the versatility of being one piece. All Barkman Steps require little to no maintenance, weigh less than cast-in-place alternatives, and can be installed year-round.

Each Barkman Legacy Step features raised tread lines for added traction.

Multiple installation configurations are available, ensuring Barkman Steps can be installed at virtually any home.

More ideas at [BarkmanConcrete.com](http://BarkmanConcrete.com)  
Railings not supplied by Barkman.  
Actual colours may vary.





# Dura-Lite Steps

Add a contemporary touch to your entranceway with Barkman Dura-Lite Steps. Easy installation and assembly make it the ideal option for the do-it-yourself homeowner. Better still, the lightweight construction allows these steps to be built in locations that cannot be accessed with traditional methods. Dura-Lite features a non-slip pebblestone surface available in Charcoal and Regular Pebblestone.

Dura-Lite's pebblestone surface offers a very durable and long lasting traction.

More ideas at [BarkmanConcrete.com](http://BarkmanConcrete.com)  
Railings not supplied by Barkman.  
Actual colours may vary.





# Specifications

For complete details on all Barkman products see the Barkman Specifications guide, Barkman *Spaces at Home* catalogue or [BarkmanConcrete.com](http://BarkmanConcrete.com)

Custom sizes and riser counts available. Call for pricing.

## Sectional Steps



Width	No. of Risers
4'	1-5
5'	1-5
6'	1-5
7'	1-5
8'	1-5
9'	1-5
10'	1-5
11'	1-5
12'	1-5
13'	1-5

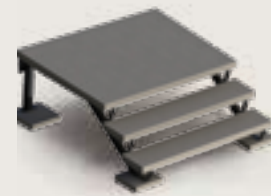
## Legacy Steps



Width	No. of Risers
4'	1-6
5'	1-6
6'	1-6

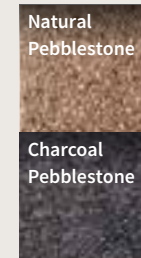
Platforms available from 11" to 60" depth (60" depth for a side entrance step)

## Dura-Lite Steps



Plank Thickness	Width	No. of Risers
2.5 in	4'	1-5
2.5 in	5'	1-5
4 in	4'	1-5
4 in	5'	1-5
4 in	6'	1-5

### Colours



## Dura-Lite Planks

Item No.	Sizes (L x W x H)
102000	914 x 305 x 64 mm 36 x 12 x 2.5 in
102002	1219 x 305 x 64 mm 48 x 12 x 2.5 in
101997	1524 x 305 x 64 mm 60 x 12 x 2.5 in
102089	1219 x 305 x 102 mm 48 x 12 x 4 in
102017	1524 x 305 x 102 mm 60 x 12 x 4 in
102103	1829 x 305 x 102 mm 72 x 12 x 4 in

## Cantilever Brackets

Cantilever Brackets integrate with all Barkman steps and are available from 12" – 84".

# Ordering Guide

When the time comes to get your steps replaced, look to Barkman. Our precast concrete steps are exceptionally well-built, and are engineered to withstand the rigours of the Canadian climate. Installation can be done in both summer and winter. We will work with you directly and even haul your old steps away.

Call or email for a free quote at 1 800 342 2879 or [Winnipeg@barkmanconcrete.com](mailto:Winnipeg@barkmanconcrete.com).





**barkman**<sup>™</sup>

[BarkmanConcrete.com](https://www.BarkmanConcrete.com)

