

## STRUCTURAL FEATURES

Dimensions ..... 83" x 63" / 211 cm x 160 cm  
 Depth ..... 30" / 76 cm  
 Seating Capacity ..... 3  
 Water Capacity (gal./liters) ..... 193 gal / 731 ltr  
 Weight (empty) ..... 680 lbs / 308 kg  
 Weight (full) ..... 2,280 lbs / 1,034 kg  
 Waterfall ..... Yes  
 3.5" Underwater Spa Light ..... Yes

## STANDARD UTILITY FEATURES

Programmable Filter Cycles ..... Yes  
 Treated Wooden Frame ..... Yes  
 DuraMAAX® Cabinetry ..... Yes  
 Thermo-Lock® Insulation ..... Yes  
 HDPE Sealed Base ..... Yes  
 Stainless Steel Jets ..... Yes  
 Dynamic LED Lighting ..... Yes  
 Pump1 ..... 1.5Hp/3.0bHp, 115V, 2Sp  
 Pump1 (Export) ..... 2.0Hp/4.0bHp, 230V, 2Sp  
 Electrical Requirements  
 (4-Wire) ..... 240V/30A/40A  
 (3-Wire) ..... 120V/15A/30A  
 Export ..... 230V, 50 Hz, 1x10A  
 Jet Total ..... 20

## OPTIONAL FEATURES

CleanZone® System ..... Yes

### Dealer Installed Option:

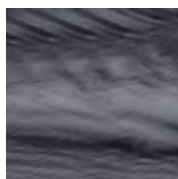
GFCI Cord ..... 15ft, 15A

## Cabinet Colors



Specifications subject to change without prior notice.

## AVAILABLE ACRYLIC COLOURS



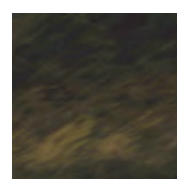
STORM CLOUDS



SILVER MARBEL



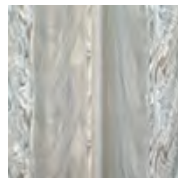
SAHARA



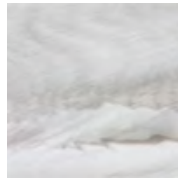
MIDNIGHT CANYON



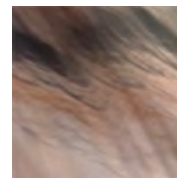
GYPSUM



SMOKEY MOUNTAIN



GLACIER MOUNTAIN



TUSCAN SUN