

# Envie 500 series

# VITA Spa

Seating: 5-6 Occupants  
Size (LxWxH): 92" x 92" x 38"  
234 x 234 x 96.5 cm  
Weight Dry /Wet: 889 / 4082 lbs.  
403 / 1852 kg  
Gals/Liters: 385 / 1456  
Pumps: Pump 1 3.0Hp/6.0bHp, 240V, 2Sp  
Pump 2 3.0Hp/6.0bHp, 240V, 2Sp  
Voltage/Amps: 240V/40A/60A  
Jets: 54

AquaGlo™  
Illuminated Contoured Pillow  
Aurora Beverage Coasters  
Aurora Cascade Water Features  
Illuminated Control Valves  
Excel-X™ (Simulated Wood)  
Freeze Protection  
Perma-Shield™ Bottom Pan  
Premier Styled Cover  
Halo Pro-Loc™ Stainless Steel Jets  
Steel Frame  
Northern Exposure™ Insulation System  
SmartTouch2 Controls

### Options:

Champagne Air (10 air jets)  
Blower 1.5Hp, 1Sp  
24-Hour Circ Pump  
CleanZone™  
CleanZone™ Ultra Dual Sanitization  
Vita Tunes  
Wifi Connectivity

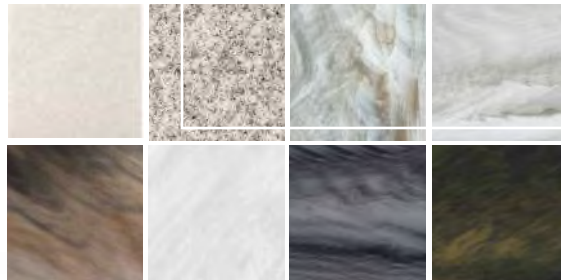


• Specifications and styling subject to change. • Spas are not to scale.

## AVAILABLE ACRYLIC COLOURS

### Colors

Your Vita Spa is available in eight vibrant colors to complement the beauty of its design.



Left to right: Gypsum, Sahara, Smokey Mountain, Glacier Mountain, Tuscan Sun, Silver Marble, Storm Clouds and Midnight Canyon

## Cabinet

**Excel-X™** This ecologically friendly, high-impact styrene looks and feels like real, natural wood. It won't weather or stain and is virtually maintenance free.

## Cabinet Colors

