

STRUCTURAL FEATURES

Dimensions	71" x 71"
Seating Capacity	4
Water Depth	35"
Weight (empty)	653 lbs
Weight (full)	2,556 lbs
Water Capacity	867 L
Jet Total	16

STANDARD UTILITY FEATURES

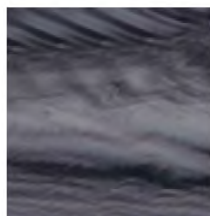
Programmable Filter Cycles	Yes
Treated Wooden Frame	Yes
DuraMAAX® Cabinetry	Yes
Thermo-Lock® Insulation	Yes
HDPE Sealed Base	Yes
Stainless Steel Jets	Yes
Dynamic LED Lighting	Yes
Pump 1	1.5Hp/3.0bHp, 115V, 2Sp
Pump 1 (Export)	2.0Hp/4.0bHp, 230V, 2Sp
<u>Electrical Requirements</u>	
(4-Wire)	240V/30A/40A
(3-Wire)	120V/15A/30A
Export	230V, 50 Hz, 1x10A



3.5" Underwater Spa Light Yes

Specifications subject to change without prior notice.

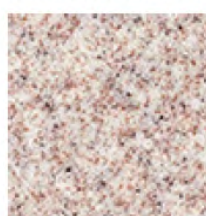
AVAILABLE ACRYLIC COLOURS



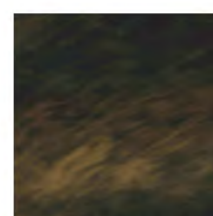
STORM CLOUDS



SILVER MARBEL



SAHARA



MIDNIGHT CANYON



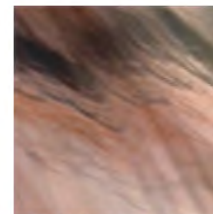
YPSUM



SMOKEY MOUNTAIN



GLACIER MOUNTAIN



TUSCAN SUN

OPTIONAL FEATURES

CleanZone® System

Cabinet Colors

