

STRUCTURAL FEATURES

Dimensions	83" x 83"
Depth.....	36"
Seating Capacity.....	5-6
Water Capacity	1272 L
Weight (empty).....	800 lbs
Weight (full).....	3586 lbs
Jet Total	40

STANDARD UTILITY FEATURES

Programmable Filter Cycles	Yes
Treated Wooden Frame.....	Yes
DuraMAAX® Cabinetry.....	Yes
Thermo-Lock® Insulation.....	Yes
HDPE Sealed Base	Yes
Stainless Steel Jets	Yes
Dynamic LED Lighting.....	Yes
Pump1	2.5Hp/5.0bHp, 240V, 2Sp
Pump 2.....	2.5Hp/5.0bHp, 240V, 2Sp
Pump1 (Export)	2.0Hp/4.0bHp, 230V, 2Sp
Pump2(Export)	2.0Hp/4.0bHp, 230V, 2Sp
Electrical Requirements (4-Wire).....	240V/40A/60A
Export.....	230V, 50 Hz, 1x25A
3.5" Underwater Spa Light.....	Yes
Lounger	Yes

OPTIONAL FEATURES

CleanZone® System

Cabinet Colors



Specifications subject to change without prior notice.

AVAILABLE ACRYLIC COLOURS



STORM CLOUDS



SILVER MARBEL



SAHARA



MIDNIGHT CANYON



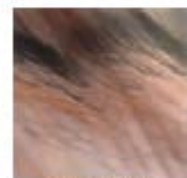
GYPSUM



SMOKEY MOUNTAIN



GLACIER MOUNTAIN



TUSCAN SUN