

451 400 Series



Dimensions.....	64" X 81"
Depth.....	31"
Seating Capacity.....	3
Water Capacity.....	705 L
Weight (empty).....	605 lbs
Weight (full).....	2,151 lbs
Jet Total.....	29

STANDARD UTILITY FEATURES

Programmable Filter Cycles.....	Yes
Steel Sub-Structure.....	Yes
DuraMAAX® Cabinetry.....	Yes
ABS Bottom Pan.....	Yes
Northern Exposure® Insulation.....	Yes
SmartTouch 2 Controls.....	Yes
Foot Relief Zone®.....	Yes
Performance Seating®.....	Yes
Head Cushions.....	3
Digital Color Optic Lighting (interior only).....	Yes
Status Indicator Light.....	Yes
Stainless Steel Jets.....	Yes

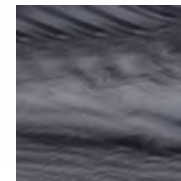
Pump 1.....	3.0Hp/6.0bHp, 230V, 2Sp
Pump 1 (Export).....	3.0Hp/6.0bHp, 230V, 2Sp

Electrical Requirements

(4-Wire).....	240/40A/50A
Export.....	230V, 50Hz, 1x32A
Illuminated Drink Holders.....	3
Lounge.....	Yes
Illuminated Spa Controls.....	Yes
3.5" Underwater Spa Light.....	Yes



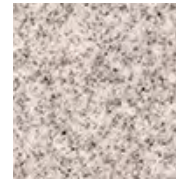
ACRYLIC COLOURS



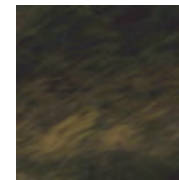
STORM CLOUDS



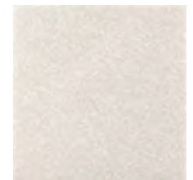
SILVER MARBEL



SAHARA



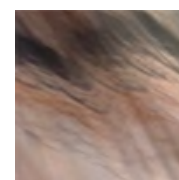
MIDNIGHT CANYON



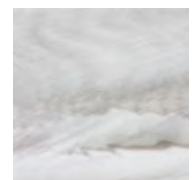
GYPSUM



SMOKEY MOUNTAIN



TUSCAN SUN



GLACIER MOUNTAIN

OPTIONAL FEATURES

- Bluetooth Music System
- CleanZone® System
- WiFi Connectivity

Cabinet Colors



760 Century Street Winnipeg, MB
 R3H 0M1
 204-783-8501
 www.crownspas.com