

470 *400 Series*



Dimensions.....	87" X 87"
Depth.....	35"
Seating Capacity.....	6
Water Capacity.....	1,120 L
Weight (empty).....	827 lbs
Weight (full).....	3281 lbs
Jet Total.....	48

STANDARD UTILITY FEATURES

Programmable Filter Cycles.....	Yes
Steel Sub-Structure.....	Yes
DuraMAAX® Cabinetry.....	Yes
ABS Bottom Pan.....	Yes
Northern Exposure® Insulation.....	Yes
SmartTouch 2 Controls.....	Yes
Comfort Collar®.....	2
Foot Dome.....	Yes
Zone Therapy® Seat.....	Yes
Shiatsu Seat.....	Yes
Head Cushions.....	2
Chromatherapy.....	Yes
Aurora Cascade Water Feature.....	2
Digital Color Optic Lighting (interior only).....	Yes
Status Indicator Light.....	Yes
Stainless Steel Jets.....	Yes

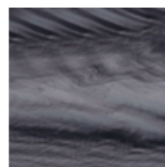
Pump1.....	3.0Hp/6.0bHp, 230V, 2Sp
Pump2.....	3.0Hp/6.0bHp, 230V, 2Sp
Pump1 (Export).....	3.0Hp/6.0bHp, 230V, 2Sp
Pump2 (Export).....	3.0Hp/6.0bHp, 230V, 2Sp
Electrical Requirements (4-Wire).....	240/40A/60A
Export.....	230V, 50Hz, 1x32A
3.5" Underwater Spa Light.....	Yes
Illuminated Drink Holders.....	4
Illuminated Spa Controls.....	Yes

OPTIONAL FEATURES

- Bluetooth Music System
- CleanZone® System
- Clean Zone® Ultra (Dual Sanitization System)
- WiFi Connectivity
- X-Series Collar
- AeroMAAX® Plus (10 air jets)



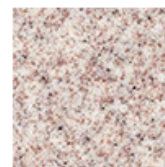
ACRYLIC COLOURS



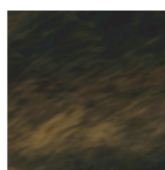
STORM CLOUDS



SILVER MARBEL



SAHARA



MIDNIGHT CANYON



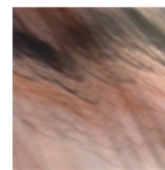
GYPSUM



SMOKEY MOUNTAIN



GLACIER MOUNTAIN



TUSCAN SUN

* Specifications subject to change without prior notice



760 Century Street
Winnipeg, MB R3H 0M1
204-783-8501
www.crownspas.com