

# 481 400 Series



Dimensions.....	91.5" x 91.5"
Depth.....	38"
Seating Capacity.....	6
Water Capacity.....	1,580 L
Weight (empty).....	938 lbs
Weight (full).....	4,403 lbs
Jet Total.....	52

## STANDARD UTILITY FEATURES

Programmable Filter Cycles.....	Yes
Steel Sub-Structure.....	Yes
DuraMAAX® Cabinetry.....	Yes
Northern Exposure® Insulation.....	Yes
ABS Bottom Pan.....	Yes
SmartTouch 2 Controls.....	Yes
Foot Relief Zone®.....	Yes
Comfort Collar®.....	2
Zone Therapy® Seat.....	Yes
Shiatsu Seat.....	Yes
Head Cushions.....	3
ChromaTherapy.....	Yes
Aurora Cascade Water Feature.....	2
Digital Color Optic Lighting (interior only).....	Yes
Status Indicator Light.....	Yes
Stainless Steel Jets.....	Yes

Pump1.....	3.0Hp/6.0bHp, 230V, 2Sp
Pump2.....	3.0Hp/6.0bHp, 230V, 2Sp
Pump1 (Export).....	3.0Hp/6.0bHp, 230V, 2Sp
Pump2 (Export).....	3.0Hp/6.0bHp, 230V, 2Sp

## Electrical Requirements

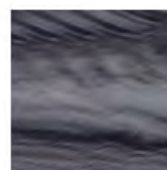
(4-Wire).....	240/40A/60A
Export.....	230V, 50Hz, 1x32A
Lounge.....	Yes
Illuminated Drink Holders.....	3

## OPTIONAL FEATURES

- Bluetooth Music System
- CleanZone® System
- Clean Zone® Ultra (Dual Sanitization System)
- AeroMAAX® Plus (10 air jets)
- WiFi Connectivity
- X-Series Collar



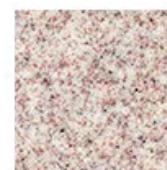
## ACRYLIC COLOURS



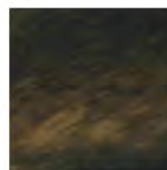
STORM CLOUDS



SILVER MARBEL



SAHARA



MIDNIGHT CANYON



GYPSUM



SMOKEY MOUNTAIN



GLACIER MOUNTAIN



TUSCAN SUN

## Cabinet Colors



760 Century Street Winnipeg, MB R3H 0M1  
 204-783-8501  
[www.crownspas.com](http://www.crownspas.com)