



Plunge Mini

POOL OWNERSHIP MADE EASY

The Plunge Mini is our most compact, affordable pool without a current. Its compact size fits almost anywhere and supports year-round recovery, relaxation, and low-impact exercise—with optional treadmill and hydrotherapy upgrades.

DIMENSIONS

Pool Exterior

10' 2" L x 8' 9" W x 4' 2" H

309 cm L x 265 cm W x 126 cm H

Pool Interior

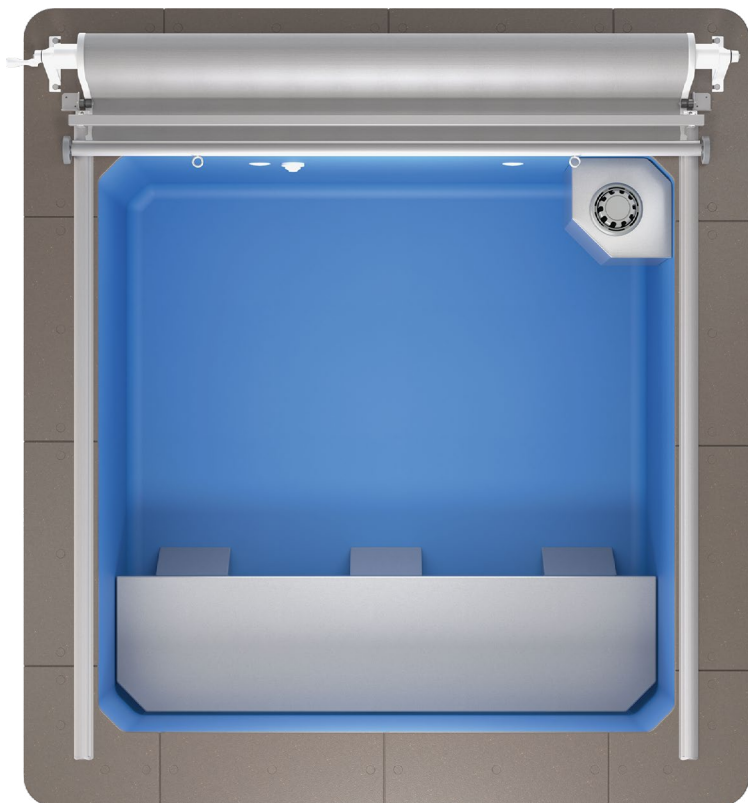
7' L x 7' W x 4' H

214 cm L x 214 cm W x 122 cm H

KEY FEATURES

- Modular Construction
- Premium Apex Coping and Ascent Skirting
- Manual Retractable Cover
- 2 Underwater LED Lights
- Energy-efficient 4kW Electric Heater
- Bench-Style Seating

Plunge Mini



Specifications

FILLED WEIGHT

14,231 lb | 6,455 kg

WATER CAPACITY

1,375 gallons | 5,203 liters

WATER DEPTH

45" | 115 cm

ELECTRICAL REQUIREMENTS

220V/30 amp, GFCI, single-phase

230v/32 amp, RCD, single-phase

STRUCTURE

Galvanized steel panels, heavy-duty vinyl liner and acrylic interior components

WATER CARE SYSTEM

Mineral Sanitizer

** Weight Filled includes the weight of water and 10 adults weighing 80 kg (175 lb) each.*

Accessories & Upgrades

FITNESS

- Underwater Treadmill
- Aquabike

COVERS

- Automatic Retractable Cover
- Bi-Fold Insulated Cover
- Thermolight Floating Cover

LIFESTYLE

- Hydrotherapy Jets
- Increased pool height - 54" | 137 cm (water depth - 51" | 130 cm)
- Alternative Heating Options Available
- Ultraviolet Sanitizer or EZ50 Advanced Oxidation Technology

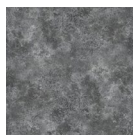
Liner Colors



Light Blue



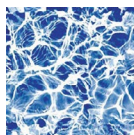
Dark Blue



Gray Marino

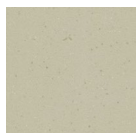


Siesta Wave

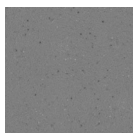


Diffusion

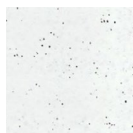
Apex Coping System



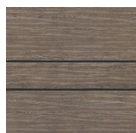
Desert Plateau



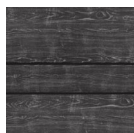
Summit Gray



Arctic Ice



Riverbed Brown

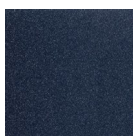


Weathered Gray

Ascent Skirting System



Platinum



Sapphire

Acrylic Component Colors

